



HARKER•MARTIN•WENTZ•SULLIVAN•RIVIELLO  
**THE MARTIN ARCHITECTURAL GROUP**  
ARCHITECTS & LAND PLANNERS

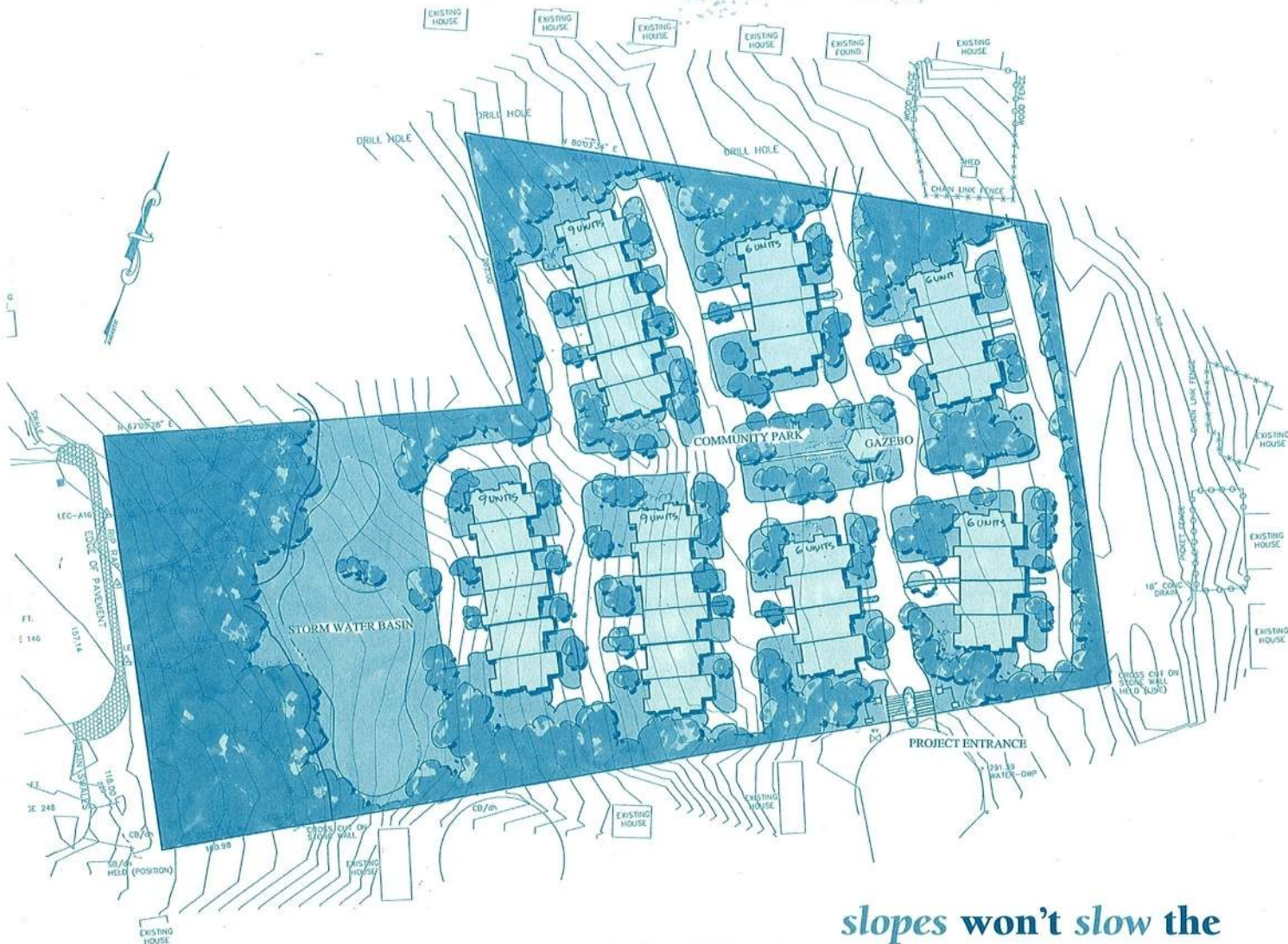
215-665-1080

561-417-2870

240 NORTH 22ND STREET  
PHILADELPHIA, PA 19103

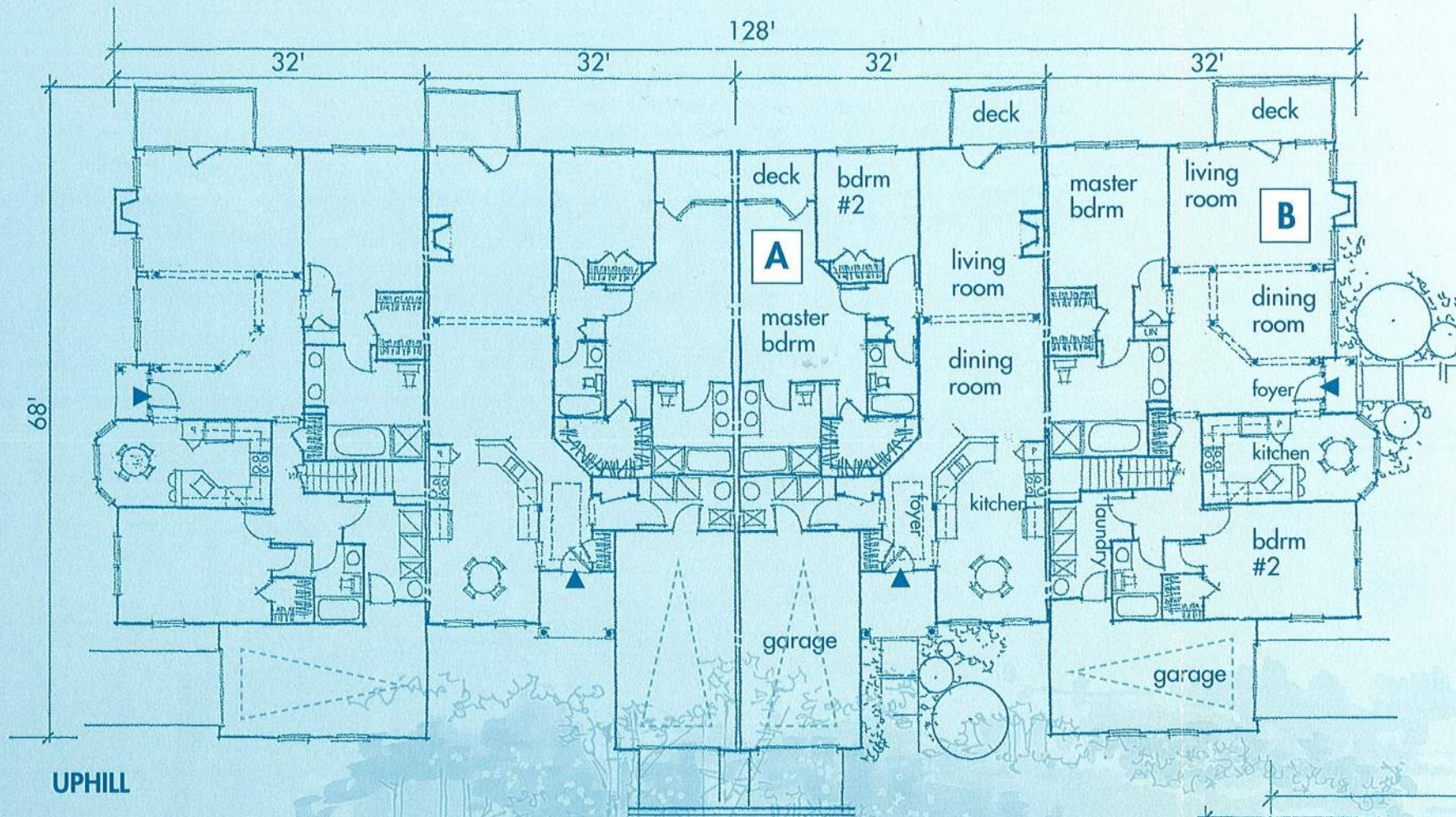
855 S. FEDERAL HWY, SUITE 218  
BOCA RATON, FL 33432

**forming new solutions,  
designing new environments**



*slopes won't slow the*  
**ACTIVE ADULT MARKET**  
*if the plan and the product make the grade*

# Topo turns into an asset with a clever uphill/downhill solution



**Unit A**  
1408 SF  
2BR/2BA  
Uphill  
Interior

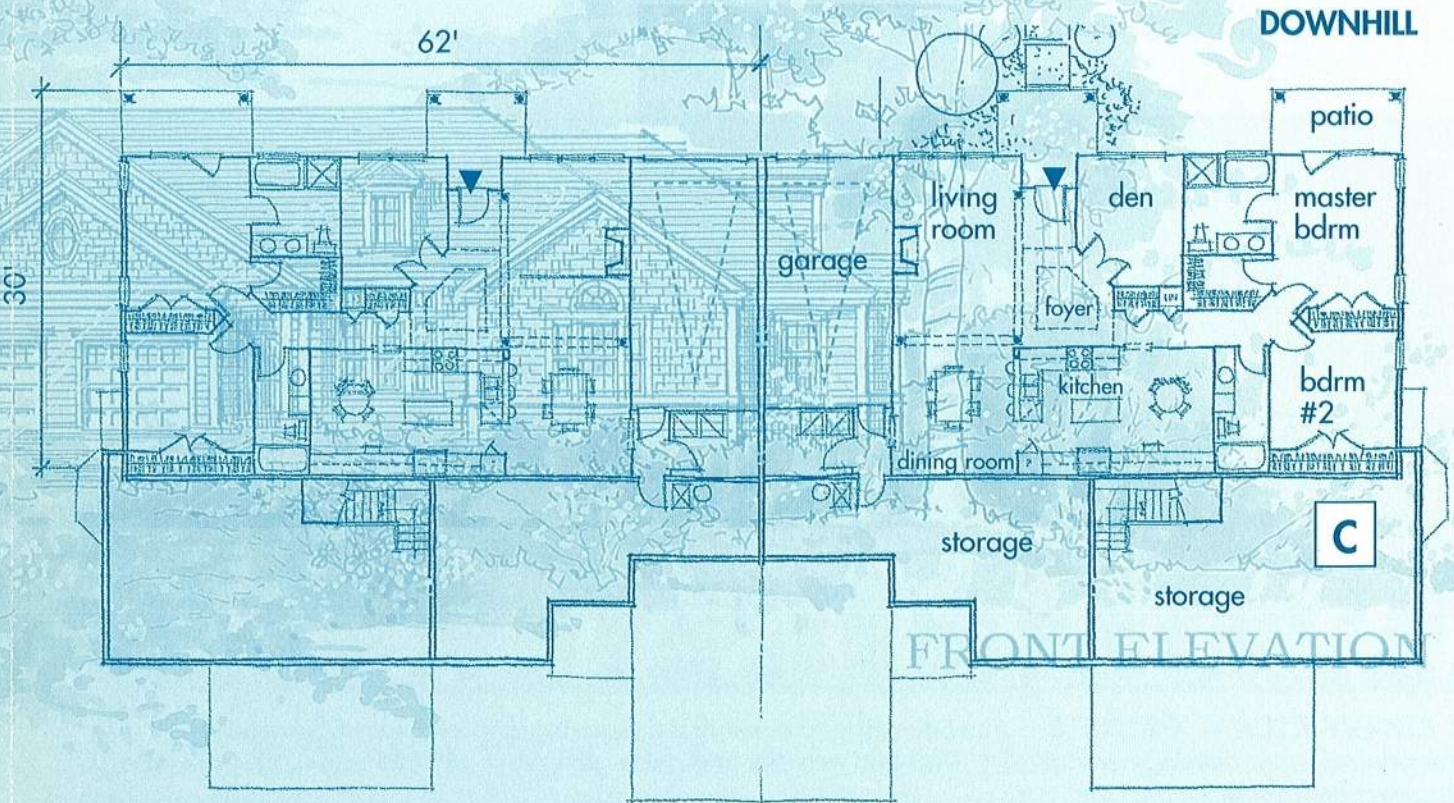
**Unit B**  
1496 SF  
Dual  
Master  
Uphill End

**Unit C**  
1590 SF  
2BR/2BA  
Downhill

Passed-over sites, especially in established communities, are usually passed-over for a reason or two. Case in point is this 10+-acre, sloping, irregularly shaped parcel hemmed in by existing large-lot single-family homes with watchful owners. Since the locally untapped middle-income active adult market isn't interested in either stairs or large multi-family blocks (and the neighbors especially weren't interested in the latter), we organized flats into low-profile buildings taking advantage of the natural site relief to get grade access for each residence, good density and double-loaded circulation. And enough room left over for a focal community park.

**Good Plan. Good Units. Good Neighbor. Fast Sales.**

For additional information on this and other pro-active designs for multi-family living, contact The Martin Architectural Group in Philadelphia at 215-665-1080 or in Boca Raton at 561-417-2870. Or see the whole story at [www.MartinAIA.com](http://www.MartinAIA.com).



\*All designs of The Martin Architectural Group are protected by copyright 2003.

forming new solutions, designing new environments

A series of contemporary planning & design concepts for a diversity of markets

multi-family