



HARKER•MARTIN•WENTZ•SULLIVAN•RIVIELLO

**THE MARTIN ARCHITECTURAL GROUP**

ARCHITECTS & LAND PLANNERS

215-665-1080

240 NORTH 22ND STREET  
PHILADELPHIA, PA 19103

561-417-2870

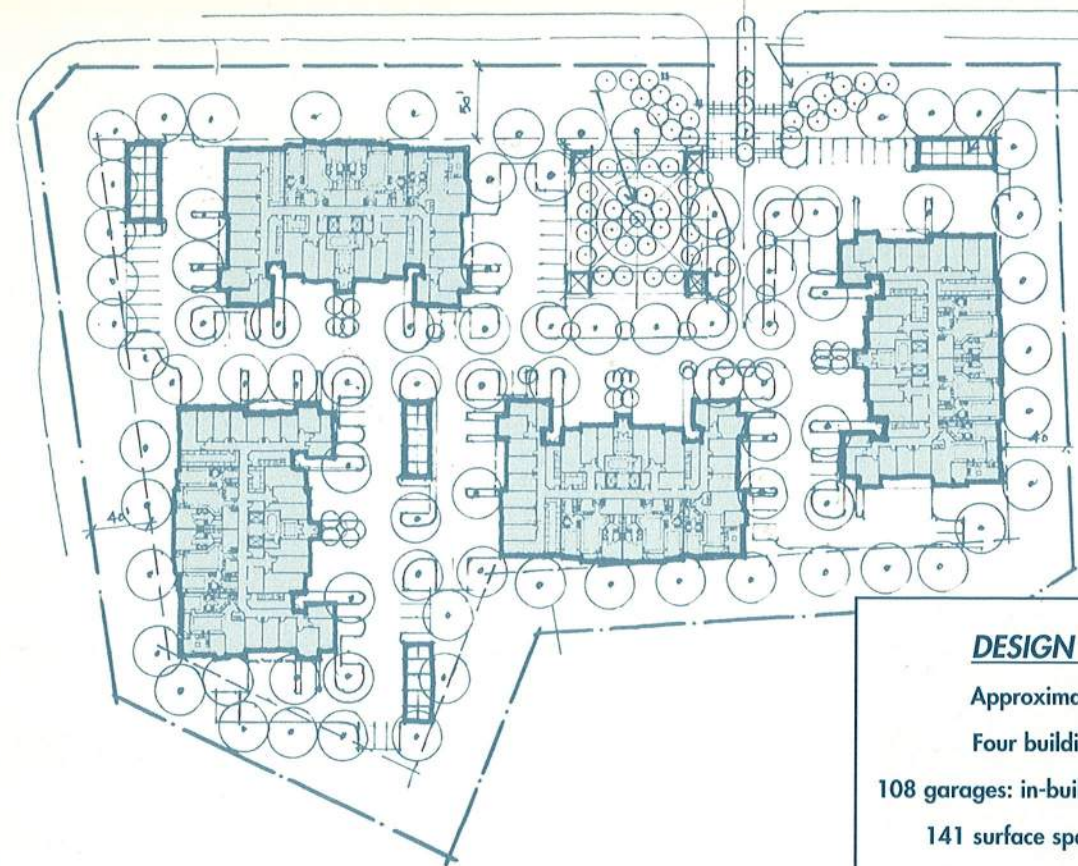
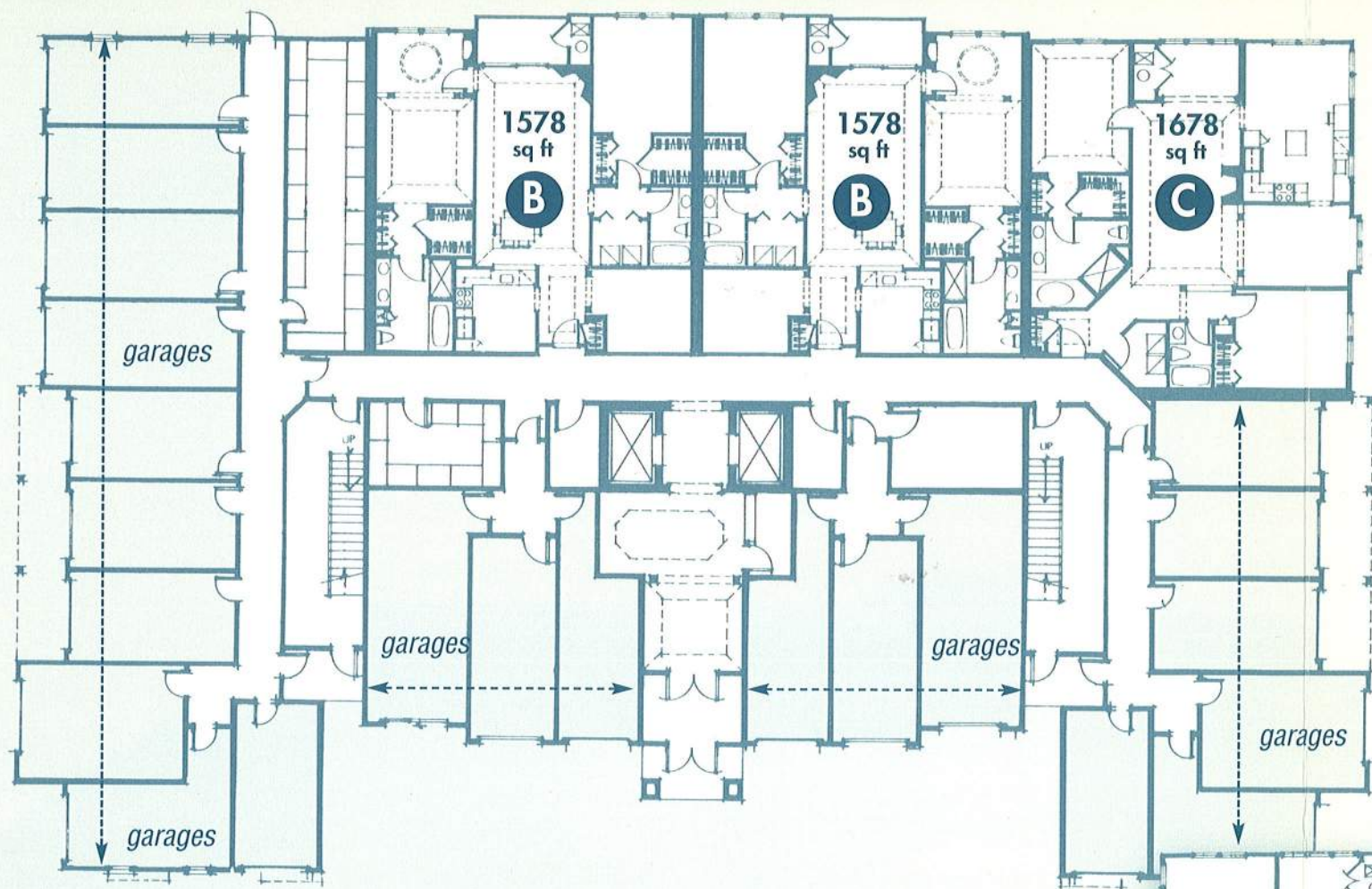
855 S. FEDERAL HWY, SUITE 218  
BOCA RATON, FL 33432

*forming new solutions,  
designing new environments*



formal elevation, clear proportions  
**CREATE *THE MANSION***  
for the infill site and executive market





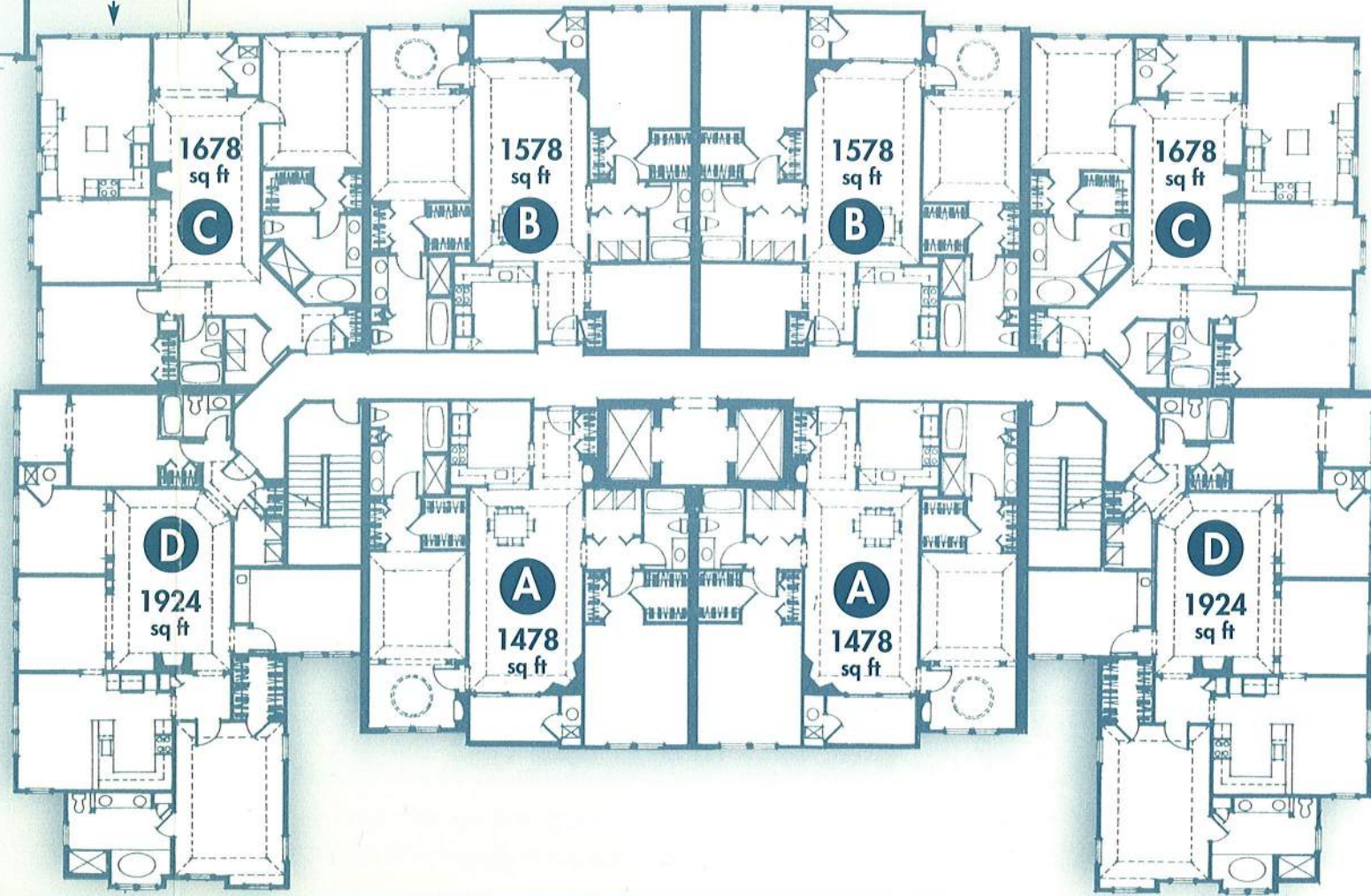
**DESIGN PROGRAM:**  
 Approximate 5.8-acre site  
 Four buildings - 108 units  
 108 garages: in-building (88); detached (20)  
 141 surface spaces (2.25 / 1 total)

## Four plans, 27-unit buildings as distinguished as the residents

For the last remaining multi-family parcel within an historic MPC, we developed *The Mansion*, a 27-unit / 22-garage residence with a mix of finish materials that bespeak tradition and long-term quality. Generous plans range from a 1578 SF to 1924 SF, organized both for formal entertaining and wired home office. The ideal move-down or move-up solution for the active professional couple.

For additional information on this and other pro-active designs for multi-family living, contact **The Martin Architectural Group** in Philadelphia at 215-665-1080 or in Boca Raton at 561-417-2870. Or see the whole story at [www.MartinAIA.com](http://www.MartinAIA.com).

All designs of The Martin Architectural Group are protected by copyright 2001.



forming new solutions, designing new environments

A series of contemporary planning & design  
 concepts for a diversity of attached markets

multi-family